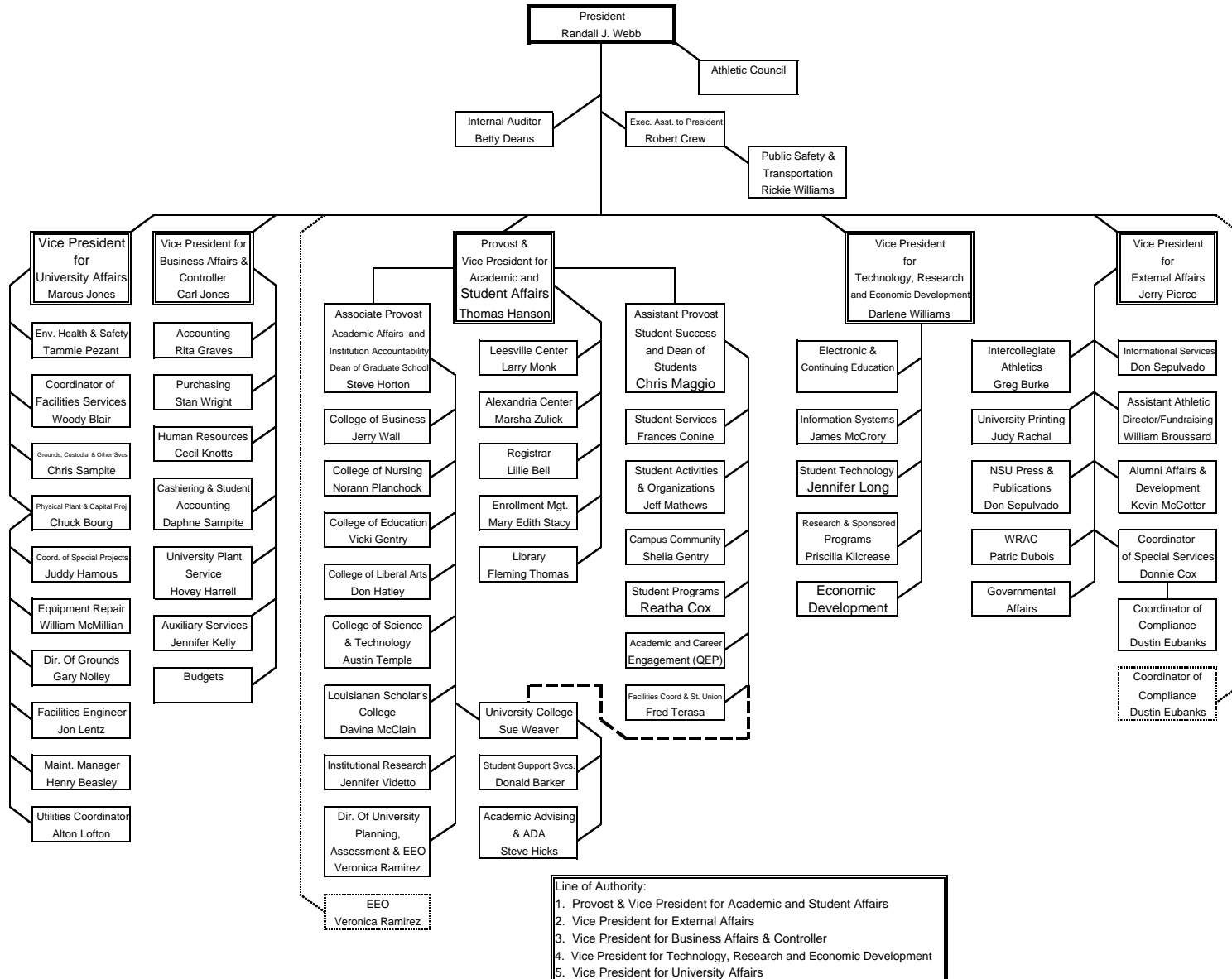


ORGANIZATIONAL CHART FOR NORTHWESTERN STATE UNIVERSITY
Board of Supervisors for the University of Louisiana System

January 2008



- Line of Authority:
1. Provost & Vice President for Academic and Student Affairs
 2. Vice President for External Affairs
 3. Vice President for Business Affairs & Controller
 4. Vice President for Technology, Research and Economic Development
 5. Vice President for University Affairs